

High Volume High Speed Cash Deposit Machines HVHS SPL CDM 3001 and SPL CDM 1500

HVHS CDM 3001 and SDM 1500 machines are designed for Indoor installations to Optimize Cash Collection, to Reduce the Risks of Cash Storage, and to create the new Competitive Advantages for Retailers, FIs, CIT and other companies.



Both machines are identical in regards of their Functionality and Main Components. The major difference being in size & weight to accommodate differences in stored cash volume (see the data-sheet below).

In addition to Deposit Automation Functionality, they can be used as a night safes to for cash storage, hence lowering the CIT visits required, and related Cash Management costs.

The compact design and small footprint of both machines enables the installation in very limited spaces; for example, a Bank's Micro-branche, Retailers Secure Room, in fact at any Customer Service Points.

Depositing Cash directly into the Store (in a "secure room" or in the shopping mall) significantly increases the Level of Cash Security, cutting the costs of Cash Management for Retailers and lowering the expenses incurred by the CIT company.

Both machines are an Ideal Solution for Couriers and Distributors providing a Cash Collection Service to their clients.

Software
Software

The machines utilize a Highly Functional Software Application Suite, “ProSafe”, which delivers numerous advanced features such as: Self-Serviced Cash Collection providing “Provisional Crediting Online” for merchants.

ProSafe can also provide End Users a fully Automated Self-Service Payment to 3rd Party Platform (i.e. without teller presence); thus, maximizing the utilization of valuable space in a Retailers, or Banks, premises to offer additional services to their Customers.

This flexible software can be configured to meet almost any Customer Requirements.

The ProSafe software is included with every machine and supports both the Cash Deposit Functionality and the Automated Multi-Provider-Payment Service as standard.

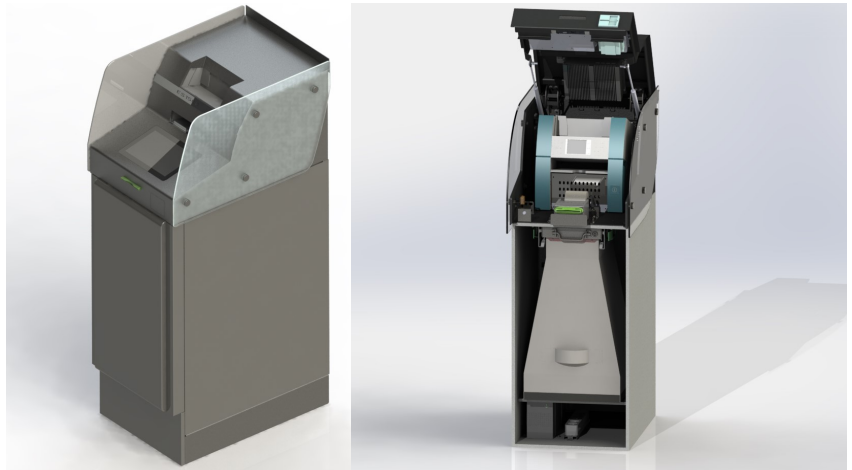
Secure Hardware Design

Intelligent Hardware Design ensures that the “Financial” and “Service” areas are physically separated, enabling simple, safe and secure operation of the machine, whether it is a simple User Replenishment or Cash Management activity.

Cash Storage and Transportation

The utilization of special canvas-based Secure High-Volume Cash Storage Bags significantly lowers operational costs.

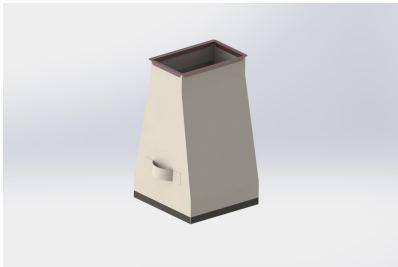
The Bags are designed in such a way as to prevent unauthorized access to the stored cash.



The Bag “entry” is secured by the flat stainless steel tamperproof lockable “Cassette”.

Once inserted, the Cassette is locked into a special frame, which is secured to the upper area of the safe.

The solution is extremely simple to use, requiring only a very short training course for Owners, Staff and CIT operatives, whilst at the same time - secure.



Both machines can be combined with High Speed High Volume Coin Deposit Unit (made in the form of a side-car - see the picture).



The technical specification of the Coin Deposit Unit you can find in the table below.

Technical specification	SPL CDM 3001	SPL CDM 1500
<i>Security</i>		
Vandal-proof steel cabinet with lock	Yes	Yes
ATM class safe:		
CENI analog	Yes	Yes
UL291	Option	Option
CENIII/IV	On request	On request
Strong box (6mm)	On request	On request
Anchoring to the floor	Yes	Yes
Burglar (seismic) alarm sensor	Yes	Yes
Separate service and cash storing zones	Yes	Yes
<i>Note validation</i>		
High quality, heavy duty note acceptor by Giesecke & Devrient	Yes	Yes
Note validation (fake, suspicious, fit/unfit, etc.) prior depositing	Yes	Yes
Total storage volume (number of genuine banknotes), up to :	30,000	10,000
High speed acceptance (notes per minute), up to:	1,200	1,200
<i>User interface</i>		
10" touch screen with customizable GUI	Yes	Yes
CIT interface, with auto-application-start (on safe door opening)	Yes	Yes
Specialized user interfaces for: cashiers, clients, CIT staff, and service engineers	Yes	Yes
Unique individual identifiers (ID) for every user/client	Yes	Yes

Thermal printer (80 mm)	Yes	Yes
Reporting		
Specially designed receipts for clients and CIT companies	Yes	Yes
Printing receipts of accepted payments	Yes	Yes
Journaling of transactions and log-files	Yes	Yes
Software		
OS Microsoft Windows 7™		
Multi-function Application Software “ProSafe”	Included	Included
Integration		
With Core Banking System and Transaction Switch (creating entries for Automated Banking System, transaction data upload to back-office)	On contractual base	On contractual base
Using original developed middleware system: (control and management of entire device base, editing of scenario’s scripts, preparation for core banking system of transaction register)	Sold separately	Sold separately
Device monitoring systems (remote technical monitoring, cash level control and incident management)	Sold separately	Sold separately
API for easy integration with Banking Information Systems, switching systems or other IT systems	Included in ProSafe	Included in ProSafe
Connectivity		
Ethernet Network Card (100 Mb/s)	Yes	Yes
GSM modem	Optional	Optional
Wi-Fi	Optional	Optional
System unit		
Intel™ Dual Core, or higher	Yes	Yes
2Gb RAM (or more)	Yes	Yes
SSD 64Gb or higher	Yes	Yes

<i>Power supply</i>		
110-120 /220V ~, 50/60 Hz	Yes	Yes
UPS 650 VA with monitoring function	Yes	Yes
<i>Dimensions and weight</i>		
H x D x W (mm)	1400 x 800 x 600	1300 x 700 x 450
Weight kg (with CENI safe)	360	300
<i>Upgradability</i>		
EPP	Option	Option
PIN PAD	Option	Option
Finger Print Scanner	Option	Option
EFT POS (as side attachment)	Option	Option
<i>Coin deposit Unit</i>		
Coin acceptance speed (coins/per min)	1100	1100
Number of denomination of accepted coins	20	20
Accuracy of coins validation	99.98%	99.98%